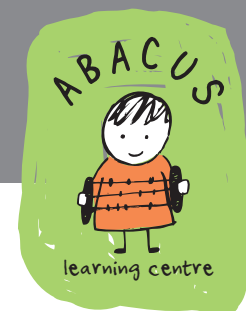


# Centre-Based Therapy



FEE SCHEDULE AS AT 1 JANUARY 2022

Early Intervention ABA programs*	
24 hour per week program	24 hours @ \$86.79 per hour = \$2082.96 per week 4 meetings per term @ \$688.76 per meeting = \$2755.04 per term
21 hour per week program	21 hours @ \$86.79 per hour = \$1822.59 per week 4 meetings per term @ \$688.76 per meeting = \$2755.04 per term
18 hour per week program	18 hours @ \$86.79 per hour = \$1562.22 per week 3 meetings per term @ \$688.76 per meeting = \$2066.28 per term
15 hour per week program	15 hours @ \$86.79 per hour = \$1301.85 per week 3 meetings per term @ \$688.76 per meeting = \$2066.28 per term
12 hour per week program	12 hours @ \$86.79 per hour = \$1041.48 per week 3 meetings per term @ \$688.76 per meeting = \$2066.28 per term
2 year-old 6 hour per week program	6 hours @ \$86.79 per hour = \$520.74 per week 2 meetings per term @ \$688.76 per meeting = \$1377.52 per term

Please note:

- Meeting cost includes one hour (face-to-face), one hour pre-meeting consult, one hour post-meeting report writing and one hour PSP update training.
- Group therapy / lunch supervision for attendance at a full day of therapy, VB-MAPPS protocol and assessment time is not included in the above fees (see other services for details).
- A calendar year consists of four terms (two terms x 12 weeks and two terms x 11 weeks = 46 weeks).

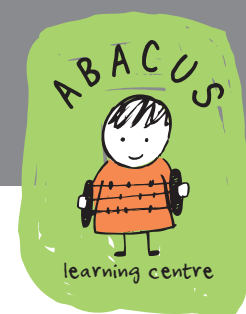
## FEE BREAKDOWN FOR ABA THERAPY PROGRAM

Service	Hourly Rate
I:I Therapy	\$86.79
Clinical Meetings	\$193.99
Clinical Meeting Report Writing - Program Support Plan (PSP)	\$193.99
Pre-meeting Consult	\$86.79
Post-meeting PSP Training	\$193.99

## ADDITIONAL CHARGES

Service	Rates
Short Notice Cancellations (SNC)	See Fees, Charges & Payments Policy
No-show at Scheduled Service	Full session fee applies
Travel	\$1.00 per km
Late Pick-up (not claimable from NDIS Funding)	\$56.16 per hour

# Centre-Based Therapy



## OTHER SERVICES

Service	Hourly Rate
Initial Assessment Meeting	\$193.99
Report from Initial Assessment Meeting (PSP)	\$193.99
Initial Student-Specific Therapist Training (3 hours)	\$193.99
VB-MAPPS Protocol	\$25.00
VB-MAPPS Assessment (2 x 3 hours annually)	\$86.79
I:3 Group Therapy / Lunch	\$28.93
I:I Supervision for Group Therapy / Lunch	\$86.79
School / Kinder Observation	\$193.99
School / Kinder Transition Support	\$86.79
Travel Time for Off-Site Services	\$86.79
Additional Report Writing - Program Supervisor	\$193.99
Count on Abacus I:I Therapy	\$86.79
Count on Abacus Clinical Meeting	\$86.79
Count on Abacus Pre-Meeting Consult	\$86.79
Count on Abacus Report Writing	\$150.61
NDIS Report Writing	\$86.79
Psychology Services	Full fee schedule available upon request

## SESSION TIMES AND TERM DATES\*

Monday-Saturday 9:15am-12:15pm and Monday-Friday 12:45pm-3:45pm

2022	Dates	Public Holidays
Term 1	Monday 10 January to Friday 1 April (12 weeks)	Wednesday 26 January and Monday 14 March
Term 2	Monday 11 April to Friday 24 June (11 weeks)	Friday 15 April, Monday 18 April and Monday 13 June
Term 3	Monday 4 July to Friday 23 September (12 weeks)	Friday 24 September
Term 4	Monday 3 October to Friday 16 December (11 weeks)	Tuesday 1 November

\*2022 Session Times and Term Dates are subject to change based on construction program / traffic management at the High Street site.

- Abacus is open 46 weeks each year across four terms. A one-week term break coincides with one week of the Victorian school holidays. The Christmas/New Year break is three weeks.
- Abacus does not operate on public holidays and clients are not charged for these days.
- Students are expected to have consistent session days and times across each term.
- Abacus is a not-for-profit organisation and all monies from fundraising and donations are put back into running and improving our services.
- The Senior Management Team monitors any changes made by the National Disability Insurance Agency (NDIA) and advises clients of amendments as required.