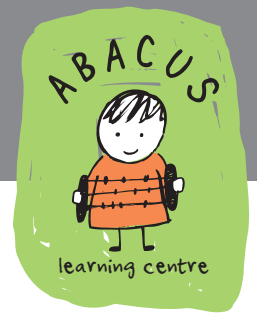


Centre-Based Therapy



FEE SCHEDULE AS AT 1 JULY 2020

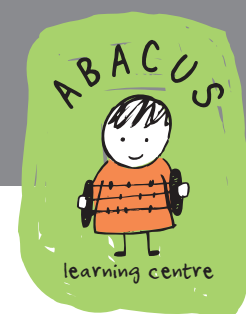
Early Intervention ABA programs*	
24 hour per week program	24 hours @ \$86.79 per hour = \$2082.96 per week 4 meetings per term @ \$387.98 per meeting = \$1551.92 per term
21 hour per week program	21 hours @ \$86.79 per hour = \$1822.59 per week 4 meetings per term @ \$387.98 per meeting = \$1551.92 per term
18 hour per week program	18 hours @ \$86.79 per hour = \$1562.22 per week 3 meetings per term @ \$387.98 per meeting = \$1163.94 per term
15 hour per week program	15 hours @ \$86.79 per hour = \$1301.85 per week 3 meetings per term @ \$387.98 per meeting = \$1163.94 per term
12 hour per week program	12 hours @ \$86.79 per hour = \$1041.48 per week 3 meetings per term @ \$387.98 per meeting = \$1163.94 per term
2 year-old 6 hour per week program	6 hours @ \$86.79 per hour = \$520.74 per week 2 meetings per term @ \$387.98 per meeting = \$775.96 per term

*Please note: lunch supervision for attendance at a full day of therapy, is not included in the above fees (see other services for details)

FEE BREAKDOWN FOR ABA THERAPY PROGRAM

Service	Hourly Rate
1:1 therapy	\$86.79
Clinical meetings	\$193.99
Clinical meeting report writing	\$193.99

Centre-Based Therapy



OTHER SERVICES

Service	Hourly Rate
Initial assessment meeting	\$193.99
Report from initial assessment meeting	\$193.99
1:3 group lunch supervision	\$28.93
1:1 lunch supervision	\$86.79
School/kinder observation	\$193.99
Report writing - post observation	\$193.99
Count on Abacus 1:1 therapy	\$86.79
Count on Abacus reports / consultations	\$193.99
NDIA report writing	\$86.79
Psychology	Full fee schedule available upon request

ADDITIONAL CHARGES

Service	Rates
Late cancellation fee (as per Code of Conduct)	\$60.00 per cancellation
Non-attendance at scheduled service	Full session fee applies
Travel	\$1.00 per km
Late pick-up	\$56.16 per hour

SESSION TIMES AND TERM DATES

Monday-Saturday 9:15am-12:15pm and Monday-Friday 12:45pm-3:45pm

2021	Dates	Public Holidays
Term 1	Monday 11 January to Thursday 1 April (12 weeks)	Tuesday 26 January and Monday 8 March
Term 2	Tuesday 12 April to Friday 25 June (11 weeks)	Monday 14 June
Term 3	Monday 5 July to Thursday 23 September (12 weeks)	Friday 24 September
Term 4	Monday 4 October to Friday 17 December (11 weeks)	Tuesday 2 November

- Abacus is open 46 weeks each year across four terms. A one-week term break coincides with one week of the Victorian school holidays. The Christmas/New Year break is three weeks.
- Abacus does not operate on public holiday and clients are not charged for these days.
- Students are expected to have consistent session days and times across each term.
- Abacus is a not-for-profit organisation and all monies from fundraising and donations are put back into running and improving our services.
- The Senior Management Team monitors any changes made by the National Disability Insurance Agency (NDIA) and advises clients of amendments as required.